

DESIGN DIVISION II

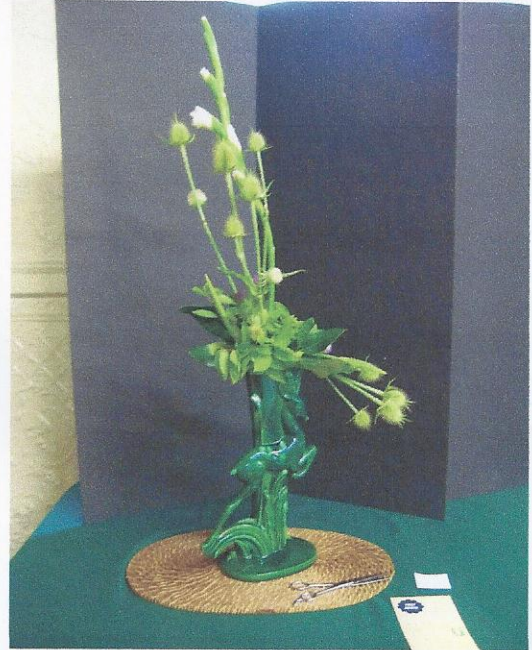
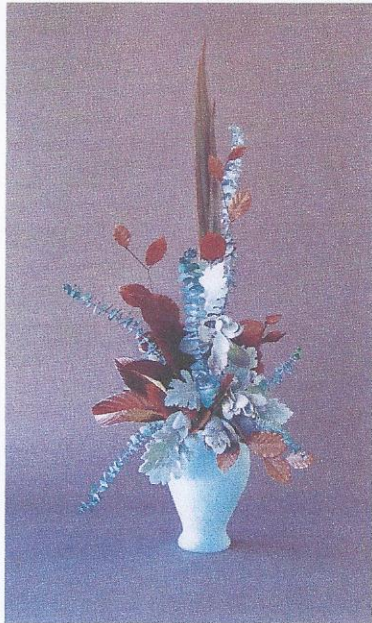
“The Gallery”

SECTION B

A Thing of Beauty”

Tricolor Award

5) “**Classicism**” A traditional Line-Mass design to be displayed on a gray 35” pedestal with an 18” diameter top. Underlay not to exceed 10” below top. (This is a tricolor section, so all plant material must be fresh and no decorative wood is allowed. Design should be 1/2 the height of the pedestal.)



Traditional designs follow set patterns. See next page. Here is a high triangle and an L shaped design. Keep plant material sparse so that it does not turn into a mass design. (fan is most likely to do this!)

CHARACTERISTICS OF TRADITIONAL DESIGNS

A. Traditional Design: an art form placed in space, usually to decorate a given area. Includes Oriental, European and Traditional American, the later a combination of Oriental and European.

1. General Characteristics:

- a. Traditional containers and common garden materials.
- b. Natural growth habits of vegetation are duplicated in design plan, imitating nature: plant material radiate upward out of container, way plant grows from ground.
- c. Set patterns of specific geometric forms required: triangle, crescent, etc.
- d. One focal area, or center of interest near rim of container.
- e. No crossed lines.
- f. Depth necessary for balance and rhythm, achieved by
 - 1) Overlapping forms
 - 2) Placing some forms in profile.
 - 3) Finishing back of design.
- g. Gradation of color and size of plant material provides rhythm and balance, as do transitional materials.
- h. Color harmonies such as monochromatic, analogous, or contrasting (complimentary) are often used.
- i. Artistic concept is expressed through selection of color, texture, line and form of plant material and other components, and in a lesser degree, use of plant material and other components in an unusual way.
- j. Usually interpret a theme as specified in schedule.